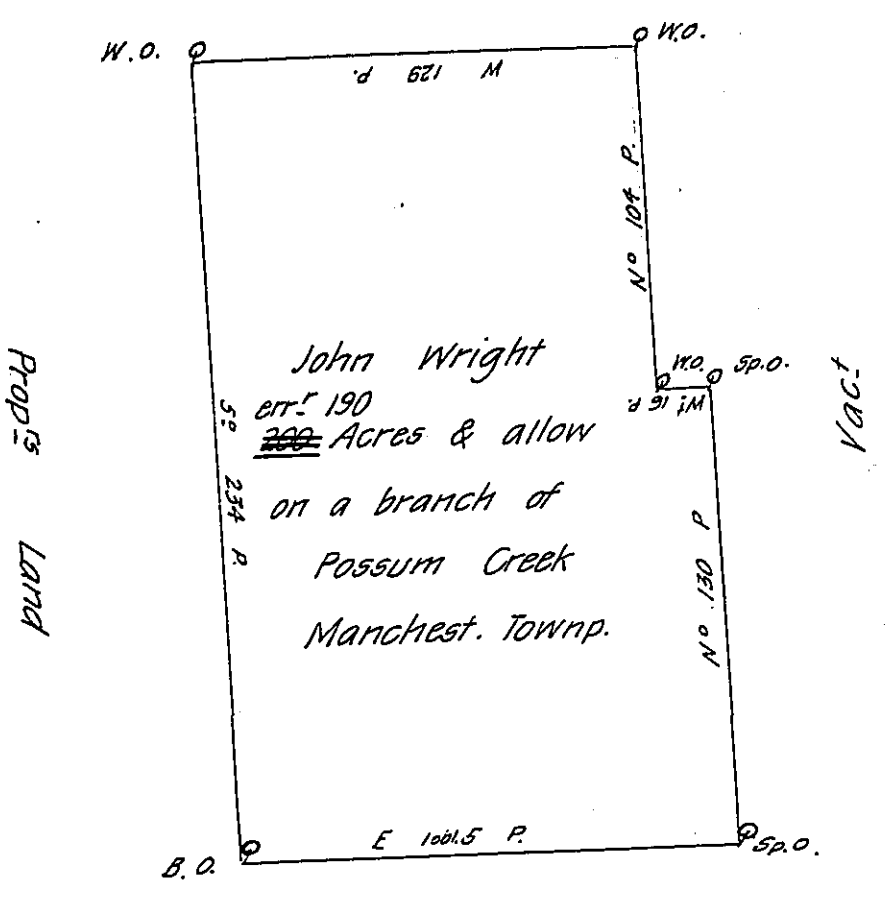


John Lawrence



A draught of John Wrights land situate on a Branch of Possum
 Creek in Manchester Township Lancaster County Containing two hundred Acres &
 the allowance sabl. Six Acres on the Hundred for Roads &c. By Virtue of the Pro-
 prietaries Warrant dated the — day of — in y^e year of our Lord — Surveyed
 the — By
 Tho Cookson Dep. Sur.

IN TESTIMONY that the above is a copy of the original remaining on file in
 the Department of Internal Affairs of Pennsylvania, made
 conformably to an Act of Assembly approved the 16th day of
 February, 1833, I have hereunto set my Hand and caused
 the Seal of said Department to be affixed at Harrisburg,
 this fifth day of May 1908

Henry Houck
 Secretary of Internal Affairs.